

Type CBT/1 and CBT-H Current Transformers

600 Volt, 10 kV BIL, Indoor or Outdoor

Product Bulletin 1VAP428111-DB



The ABB logo, consisting of the letters 'ABB' in a bold, red, sans-serif font.

Product Features

- 600 Volt Indoor or Outdoor
- 10 kV BIL
- 25 through 60 Hertz
- Primary Amperes 100-800
- Non-removable primary bar can be rotated

Application

The CBT/1 and CBT-H bar-type current transformers are designed for use in metering 600 volt circuits.

Core and Coils

The ring-type core and fully distributed winding are assembled to a glass-filled polypropylene window liner. This assembly and an aluminum base support are injection molded in thermoplastic rubber.

Insulation

Thermoplastic rubber insulating material is permanently molded to the core and coil assembly, resulting in a compact unit with excellent mechanical, thermal, and dielectric characteristics.

Primary Bar

The primary copper bar is electro-tin plated and can be rotated for convenient positioning of the transformer. It is equipped with a potential terminal suitable for #6 to #14 wire.

Secondary Terminals and Cover

Compression-type secondary terminals will accommodate #14 through #2 wire. Each unit is equipped with a retainable shorting device and clear plastic cover, suitable for locking with a meter seal.

Base

The optional base is constructed of corrosion-resistant aluminum and secured to the encapsulated base support by four symmetrically located screws. Units ordered without a base are not equipped for future base mounting.

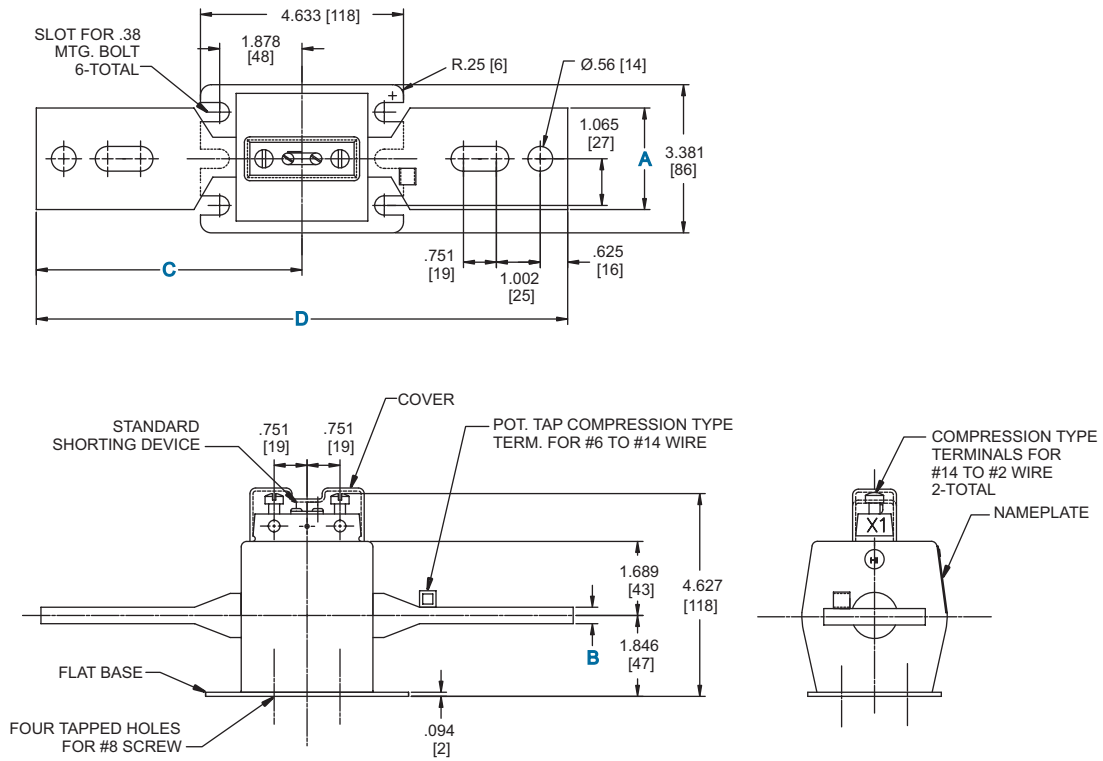
Test Reports

IEEE test reports are stored electronically and can be e-mailed in various formats at time of shipment.

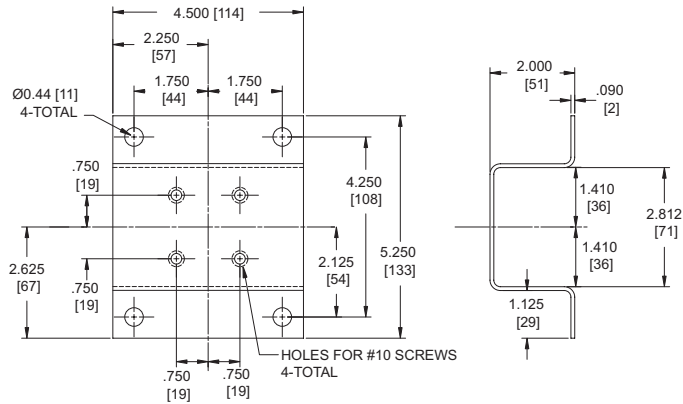
Standards

This unit meets all applicable IEEE and NEMA standards.

Unit Dimensions



Baseplate Dimensions



Note: Metric dimensions are displayed in [mm].

Primary Ampere Rating	Dimensions								Weight (lbs)	
	A		B		C		D		CBT/1	CBT-H
	(in)	(mm)	(in)	(mm)	(in)	(mm)	(in)	(mm)		
100	1.590	40	0.125	3	5.94	151	11.88	300	3.9	4.2
200	1.562	40	0.125	3	5.94	151	11.88	300	2.8	4.2
300	1.562	40	0.125	3	5.94	151	11.88	300	3.1	3.4
400	1.500	38	0.250	6	5.94	151	11.88	300	3.1	3.4
500	2.375	60	0.281	7	5.94	151	11.88	300	3.8	4.3
600	2.375	60	0.281	7	6.06	154	12.13	308	4.0	4.4
800	2.375	60	0.281	7	6.06	154	12.13	308	4.0	4.4

Selection Guide

Primary Ampere Rating	Rating Factor		IEEE Metering Accuracy	Style Number		
	30° C	55° C		No Base	Flat Base	High Base
CBT/1						
100	4.0	3.0	0.3B-0.1	7882A77G01	7882A77G02	7882A77G03
200	2.0	1.5	0.3B-0.2	7882A77G04	7882A77G05	7882A77G06
200	4.0	3.0	0.3B-0.2	7882A86G12	7882A86G04	7882A86G14
300	2.0	1.5	0.3B-0.2	7882A77G07	7882A77G08	7882A77G09
400	2.0	1.5	0.3B-0.2	7882A77G10	7882A77G11	7882A77G12
500	2.0	1.5	0.3B-0.2	7882A77G13	7882A77G14	7882A77G15
600	2.0	1.5	0.3B-0.2	7882A77G16	7882A77G17	7882A77G18
800	1.5	1.2	0.3B-0.2	7882A77G19	7882A77G20	7882A77G21
CBT-H						
100	4.0	3.0	0.3B-0.2	7882A78G22	7882A78G23	7882A78G24
200	2.0	1.5	0.3B-0.5	7882A78G04	7882A78G05	7882A78G06
300	2.0	1.5	0.3B-0.5	7882A78G07	7882A78G08	7882A78G09
400	2.0	1.5	0.3B-0.5	7882A78G10	7882A78G11	7882A78G12
500	2.0	1.5	0.3B-0.5	7882A78G13	7882A78G14	7882A78G15
600	2.0	1.5	0.3B-0.5	7882A78G16	7882A78G17	7882A78G18
800	1.5	1.2	0.3B-0.5	7882A78G19	7882A78G20	7882A78G21

Additional styles available upon request. Contact your ABB Sales Representative or call +1-252-827-3212 for more information.



ABB Inc.
 Highway 43 North
 Pinetops, NC 27864
 Tel: +1-252-827-3212
www.abb.com/mediumvoltage