



U264

**APPLICATION**

- Single meter position
- Designed to receive watthour meters that meet ANSI C12.10
- Overhead/underground feed
- Surface or semi-flush mounting

**CONSTRUCTION**

- Type 3R construction
- Manual circuit closing bypass under separate sealable cover
- Snap type sealing ring included
- 5th jaw provision at nine o'clock – U264 only
- Ring style

**STANDARDS**

- UL 414 listed, complies with ANSI C12.7

**FINISH**

- ANSI 61 gray acrylic electrocoat finish

**ACCESSORIES**

- 5th jaw kit, – catalog #50365
- Screw type sealing ring, – catalog #25016D
- Steel or clear lexan covers for socket opening
- AW hubs

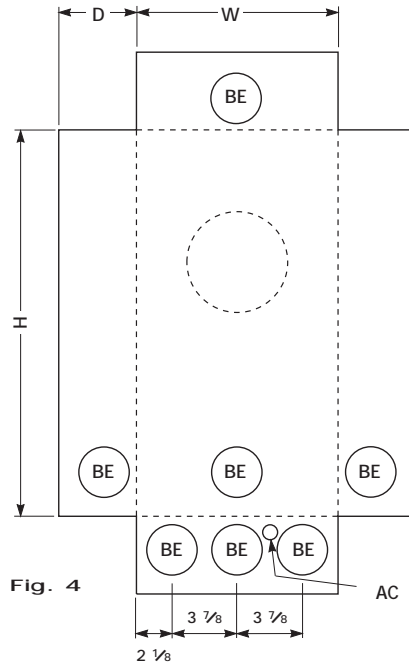
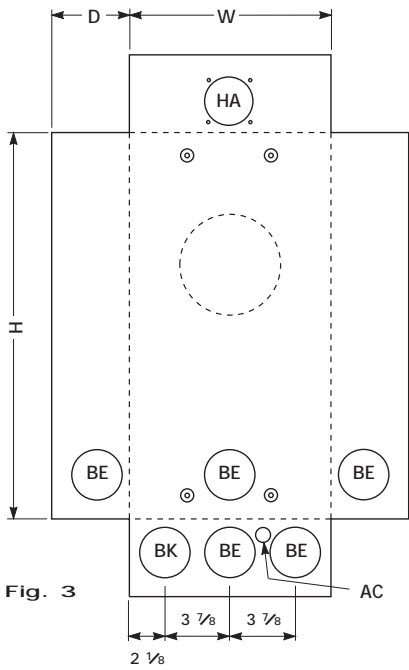
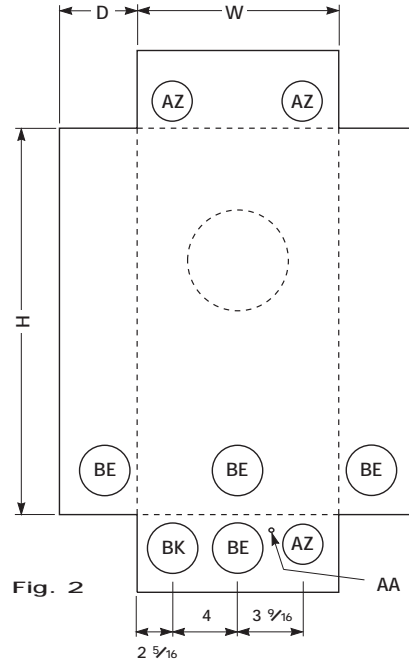
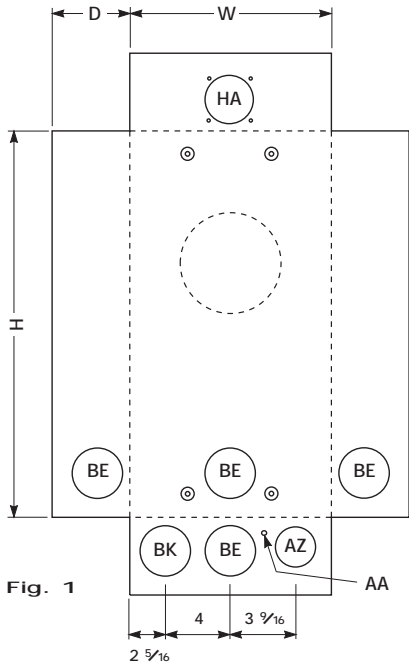
**Overhead/Underground–Surface Mount**

CATALOG NUMBER	AIC RATING	AMPACITY		VOLTAGE	SERVICE TYPE	NUMBER OF JAWS	BYPASS TYPE	HUB PROV.	CONDUCTOR LUG RANGE		FIGURE NUMBER	DIMENSIONS (INCHES)		
		MAX.	CONT.						PHASE CONDUCTOR LINE/LOAD	NEUTRAL CONDUCTOR		HEIGHT (H)	WIDTH (W)	DEPTH (D)
U264	†	250	200	600	1Ø 3W	4	MCC	AW	6 AWG - 250kcmil	6 AWG - 250kcmil	Fig. 1	23	12	4 5/8
U267	†	250	200	600	3Ø 4W	7	MCC	AW	6 AWG - 250kcmil	6 AWG - 250kcmil	Fig. 3	23	12	5

**Overhead/Underground–Flush Mount**

CATALOG NUMBER	AIC RATING	AMPACITY		VOLTAGE	SERVICE TYPE	NUMBER OF JAWS	BYPASS TYPE	HUB PROV.	CONDUCTOR LUG RANGE		FIGURE NUMBER	DIMENSIONS (INCHES)		
		MAX.	CONT.						PHASE CONDUCTOR LINE/LOAD	NEUTRAL CONDUCTOR		HEIGHT (H)	WIDTH (W)	DEPTH (D)
U264F	†	250	200	600	1Ø 3W	4	MCC	NONE	6 AWG - 250kcmil	6 AWG - 250kcmil	Fig. 2	23	12	4 5/8
U267F	†	250	200	600	3Ø 4W	7	MCC	NONE	6 AWG - 250kcmil	6 AWG - 250kcmil	Fig. 4	23	12	5

† = Meter sockets on this page have certain short circuit current ratings when used in conformance with the tables on page 14.



Knockouts — Conduit Sizes	
AA	= 1/4"
AC	= 1/2" - 1/4"
AZ	= 2" - 1 1/2" - 1 1/4" - 1"
BE	= 2 1/2" - 2" - 1 1/2" - 1 1/4"
BK	= 3" - 2 1/2" - 2" - 1 1/2"
HA	= AW HUB